



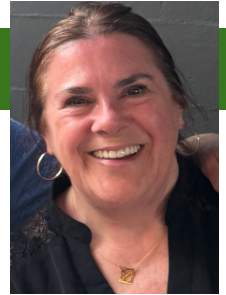
News From the Lake

Spring 2026 • Little Sand Lake Area Association • Park Rapids, Minnesota

Website: littlesandlakemn.com | Facebook: Little Sand Lake, Park Rapids, MN | Email: LittleSandLakeAA@outlook.com

LSLAA Mission Statement: The Little Sand Lake Area Association Mission is to promote a sense of community among Little Sand Lake residents through social events, information-sharing, and collective action on issues important to all of us.

PRESIDENT'S LETTER • *Cindy Nollette, LSLAA President*



Dear Little Sand Lake Association Members,

It is truly an honor to serve as President of the Little Sand Lake Association. As I write my first President's Letter, I want to begin by expressing my sincere gratitude to everyone who has helped make this association such a strong and caring community over the years.

A special thank you goes to Christine Hobrough for her outstanding leadership and dedication as our past president. Christine has given so much of her time, energy, and heart to this lake and our association, and I deeply appreciate all she has done for Little Sand Lake. I continue to consult with Christine regularly and am grateful for her guidance and support as I step into this role.

I am also deeply appreciative of our Board of Directors and executive team, who contribute countless volunteer hours behind the scenes to support the association and protect the lake we all love. Their dedication and commitment are essential to preserving the strong community we value so much.

I have served on the Little Sand Lake Association Board since 2018 and as our COLA representative since 2019. My family has owned a small seasonal cabin on Little Sand Lake since 2014, and over the years I have come to truly love not only the beauty of the lake itself, but also the incredible people who make up this community. Recently, I saw a fellow resident refer to Little Sand as "healing waters," and I could not think of a more fitting description.



Each season on Little Sand brings moments many of us quietly look forward to — the anticipation of ice-out and the first open water of spring, the familiar cry of the loons returning to the lake, warm summer evenings on the water, breathtaking sunsets, the dancing Northern

Lights overhead, and the stillness that arrives as winter settles in. These shared experiences remind us why protecting this special place matters so deeply.

One of the most important priorities for our association continues to be AIS prevention and protecting the long-term health of the lake. We are grateful for the increased support we received this past year through private donations, silent auction

proceeds, and our annual picnic fundraiser. These contributions help support launch inspections and ongoing AIS prevention efforts that preserve our water quality, fishing quality, wildlife, recreation, and natural beauty.

This past year also brought several important accomplishments, including improved lake safety efforts, the addition of a new buoy after resident concerns were raised, updated "No Wake" signage to help address shoreline erosion concerns, and refreshed signage at the public launch.

We also continued work on modernizing our membership system. Thanks to the efforts of Christine Hobrough and Jacob Nollette, our new subscription-based membership platform will help reduce volunteer workload, improve accuracy, and make membership renewal easier and more convenient for everyone.

It is critical that all Little Sand Lake residents become members of the association. Membership dues play an important role in funding AIS prevention, launch inspections, and other lake stewardship efforts. If you have new neighbors on the lake, please encourage them to join the association and become involved in our community.

One of the things that makes Little Sand Lake so special is the strong sense of community we continue to build together. From our 4th of July Boat Parade to the fishing contest, photo contest, and many activities organized by our Social Committee, these traditions create lasting memories and strengthen the friendships that make this lake feel like home.

As we look ahead, I remain excited and hopeful about the future of Little Sand Lake. If you ever have questions, concerns, or ideas about how we can continue protecting and improving our lake, please do not hesitate to reach out. The greatest strength of our association is the willingness of our residents to stay involved, share ideas, and work together for the good of the lake and our community.

Thank you for your support, your commitment, and your love for Little Sand Lake. I look forward to serving this wonderful association and seeing many of you throughout the season.

Warm regards,

Cindy Nollette - President, Little Sand Lake Association

2026 LITTLE SAND SOCIAL EVENTS

*The Social Committee is back in action!
We kicked things off this spring with a
Cinco de Mayo gathering at Vallartas.*

WEEKLY EVENTS

Weekly Walking Group - Tuesdays and Thursdays. Meet at Heartland Trailhead in Dorset: 9 am in May, June, and September | 8 am in July and August

EVENTS:

Neighborhood Coffee - We're still looking for hosts in June and July. If you would like to host please call/text Phyllis Trutna at 719-440-1330. Thank you to all of our wonderful coffee hosts!

Zorbaz LSLAA Dinners - the last Monday of each month, all year!

Woman's Bunco is BACK! - If you are interested in hosting please call/text Phyllis Trutna at 719-440-1330.

AIS Fundraisers - We have some great opportunities to raise funds for AIS this summer: Burger Night in June, July's Picnic will have a Bake Sale & Silent Auction with Christmas items.

Movie Night - TBD on Movie Schedule

Bonfire - Randi Herda and Adam Goebel will be hosting a Bonfire! Info to follow.

Roadside Pickup - Meet at the south drive of Glacier Dr. (Public Access Road) Wear boots, a bright top, gloves. Bright Vests and Bags will be available. Bring a "reacher" if available.

Event Ideas? Please email them to LittleSandLakeAA@outlook.com

Please check your email, or email LittleSandLakeAA@outlook.com, for event confirmation and details.

JUNE 2026

WELCOME BACK BREAKFAST AT LA PASTA

June 4 - Thursday, 9 am
RSVP by May 30 Text/Call Amy:
952-913-8067

ANNUAL LSLAA MEETING AT ZORBAZ

June 13 - Saturday, 8 am
8:00 am Registration Coffee/Social
8:30 am Meeting Starts. Muffins, bagels, tea & coffee will be served.

AIS FUNDRAISER BURGER EVENT AT SHORTY'S

June 13 - Saturday, ALL DAY
Make sure to let your server know that you are from Little Sand, a portion of your burger purchase will be donated to our AIS fund!

MEN'S BREAKFAST AT GREAT NORTHERN

June 18 - Thursday, 9 am
RSVP by June 11 Text/Phone Phyllis:
719-440-1330

LADIES BUNCO AT TRUTNA'S

June 18 - Thursday, 3 pm
RSVP by June 11 Text/Call Phyllis:
719-440-1330

CLUBHOUSE DINNER

June 26 - Friday, 5pm
Come support owner Rob Swanson, the previous manager of Zorbaz
RSVP by June 19 Text/Call Dar:
612-819-0242

PIZZA NIGHT AT ZORBAZ

June 29 - Monday, 5pm

STRAWBERRY FULL MOON PONTOON/BOAT PARTY

June 29 - Monday, 7:30 pm
Meet near the Public Access

JULY 2026

ROADSIDE PICKUP

July 2 - Thursday, 9:30 am

JULY 4TH BOAT PARADE

July 4 - Saturday, 9 am

ICE CREAM SOCIAL

July 4 - Saturday, 2 pm
Meet us on the lake sand bar for a treat!
Hosted by Chris & Amy Sorensen



LSLAA ANNUAL PICNIC CHRISTMAS IN JULY!

July 25 - Saturday, 5 pm
Wear red or green.
Hosted by Paul & Laurie Isakson
RSVP July 19 Text/Call Amy:
952-913-8067

PIZZA NIGHT AT ZORBAZ

July 27 - Monday, 5 pm

AUGUST 2026

FISHING TOURNAMENT

August 1 - Saturday, 5 pm

NEIGHBORHOOD COFFEE

August 8 - Saturday, 10 am
Hosts Bill and Lori Douglas
21719 Get Around Road

DINNER AND MINI GOLF

August 18 - Tuesday, 5 pm
Dorset House then Heartland Trailside
Mini Golf in Dorset
RSVP by August 13 Text/Call Vicki:
701-741-3935

PIZZA NIGHT AT ZORBAZ

August 31 - Monday, 5 pm

STURGEON FULL MOON PONTOON/BOAT PARTY

August 27 - Saturday, 7:30 pm
Meet near the Public Access

SEPTEMBER 2026

ROADSIDE PICKUP

September 4 - Friday, 9:30 am

NEIGHBORHOOD COFFEE

September 5 - Saturday, 10 am
Hosts Christine & Dave Hobrough
21502 Goldenrod Drive

END OF SEASON BREAKFAST

September 10 - Thursday, 9 am
Tavern 203
RSVP by September 4 Text/Call Dar:
612-819-0242

PIZZA NIGHT AT ZORBAZ

September 28, 5 pm

Questions or suggestions? Contact us

Phyllis Trutna (Chair): 719-440-1330

Dar Swanson: 612-819-0242

Karen Odegard: 303-709-2120

Vicki Johnson: 701-741-3935

Amy Sorensen: 952-913-8067

Details/updates: littlesandlakemn.com

LAKE STEWARDSHIP

Dry Spring Raises Wildfire Concerns in Hubbard County

An unusually dry spring across north-central Minnesota has increased wildfire concerns heading into the summer season. The Minnesota DNR has already placed Hubbard County under spring burning restrictions due to elevated fire danger caused by warm temperatures, dry vegetation, and below-normal moisture conditions. ([Minnesota DNR](#))

State officials say wildfire risk is especially high during the period between snow melt and spring green-up, when grasses, leaves, and brush dry out quickly. The DNR notes that more than 90% of Minnesota wildfires are caused by people, often from escaped debris burns or unattended campfires.

Residents and visitors around Little Sand Lake are encouraged to:

- use caution with campfires and fire pits,
- avoid burning brush or yard waste,
- keep water or extinguishers nearby,
- and stay updated on local burning restrictions and Red Flag warnings.

Current fire danger maps and restrictions are updated daily through the Minnesota DNR. ([Minnesota DNR](#))

Fishing Ethics and Stewardship

Fishing is more than catching. It is also important for anglers to be good stewards of Minnesota's natural resources.

This means doing your part to support healthy lakes and rivers, preventing the spread of unwanted aquatic invasive species, practicing catch-and-release fishing and more.

In order to fish in Minnesota, you need to buy a Minnesota fishing license if you're 16 or older. Annual licenses allow you to fish from March 1 to the last day of February the following year.

To qualify for a resident fishing license you must:

- Have established a legal residence in Minnesota for at least the past 60 consecutive days.
- If 21 or older, possess a current Minnesota driver's license, state-issued identification card or have a receipt for an application for a driver's license or state ID that is at least 60 days old.
- Be at least 16 years of age.

Catch-and-Release

Many anglers who fish practice catch-and-release rather than keeping their catch. This allows fish to continue growing and gives other anglers a chance to catch them.

- **Limit Out-of-Water Time:** Keep the fish in or over the water as much as possible.
- **Do Not Toss:** Gently slide the fish back into the water rather than dropping or throwing it.
- **Revive the Fish:** If the fish is tired or struggling to swim away, hold it in the water in a horizontal position. Cradle it under the belly and gently move it forward into the current so that water flows through its mouth and over its gills until it regains its energy.
- **When to Keep:** Do not release a fish that can be legally kept if it is bleeding heavily or unable to right itself.



KIDS KORNER: GROWING FUTURE LAKE STEWARDS



A child's connection to the lake often begins with simple moments — skipping rocks, spotting turtles near the shoreline, looking for deer, dropping a fishing pole from the dock or out on the lake, or hearing loons call across the water at dusk. These experiences become more than summer memories; they shape how young people understand and value the natural world around them. Those connections also build long lasting family memories and connections, often for generations.

Stewardship begins long before children can fully understand topics like water quality, invasive species, or shoreline management. It begins with curiosity. When children are encouraged to explore nature, ask questions, and participate in caring for the lake environment, they begin developing a lifelong sense of responsibility and respect.

Young minds learn best through example. Children notice when adults respect wildlife habitats, conserve water, or talk about keeping the lake healthy for future generations. These small actions quietly teach an important lesson: the lake is not just a place we use — it is a place we care for.

HEALTHY LAKE COMMITTEE

Proposed AIS Funding Cuts Could Have Serious Consequences for Minnesota Lakes

Why Local Awareness and Involvement Matter More Than Ever

Minnesota's Aquatic Invasive Species Prevention Aid (AISPA) program has been one of the state's most important tools in helping slow the spread of aquatic invasive species such as zebra mussels, Eurasian watermilfoil, starry stonewort, and spiny water flea.

Since 2014, the program has provided approximately **\$10 million annually** to counties across Minnesota to support:

- Watercraft inspections
- Boat decontamination programs
- Public education and outreach
- Early detection and monitoring
- Local AIS prevention partnerships

However, current state budget discussions include a proposed **50% reduction in AIS Prevention Aid beginning in 2027**, reducing funding from approximately **\$10 million to \$5 million annually according to Mn Rivers and Lakes**.

Many AIS experts, county officials, and lake organizations have expressed serious concerns about the long-term impacts these reductions could have on Minnesota lakes.

Why This Matters

County-led AIS programs currently account for an estimated **90% of Minnesota's prevention efforts**, including inspections, education, cleaning stations, and outreach programs.

Research from the Minnesota Aquatic Invasive Species Research Center (MAISRC) shows these programs are making a measurable difference. Since AIS prevention funding began:

- The rate of new infestations has slowed
- Watercraft inspections have proven highly effective
- Researchers estimate that approximately **70 zebra mussel infestations may have been prevented over the past decade** per the Minnesota Aquatic Invasive Species Research Center in St. Paul

Without continued prevention efforts, experts warn that new infestations could accelerate again.

Potential Impacts of Funding Reductions

If AIS Prevention Aid is reduced beginning in 2027, lake communities across Minnesota could experience:

- Fewer watercraft inspectors at public accesses
- Reduced inspection hours during busy weekends
- Less early detection monitoring
- Reduced education and outreach efforts

- Greater pressure on local lake associations and volunteers
- Increased risk of invasive species spreading between lakes

For Little Sand Lake, where zebra mussels have recently been confirmed, these concerns are especially important. Continued monitoring and prevention efforts remain critical to protecting the long-term health and recreational quality of our lake.

The Financial Impact

AIS prevention is often far less expensive than long-term management after invasive species become established.

State and county officials have noted:

- Studies estimate that **every \$1 spent on prevention may save up to \$100 in future management costs**.
- A single starry stonewort eradication effort at Lake Koronis is expected to cost approximately **\$800,000 over five years**.
- In 2024 alone, Minnesota taxpayers spent more than **\$2.6 million on AIS management efforts**.

Minnesota's lakes also play a major role in tourism, recreation, property values, and local economies throughout the state. The health of our lake contributes to the livelihood of the area businesses.

What Residents Can Do

As state funding becomes more uncertain, local involvement and responsible lake stewardship become increasingly important.

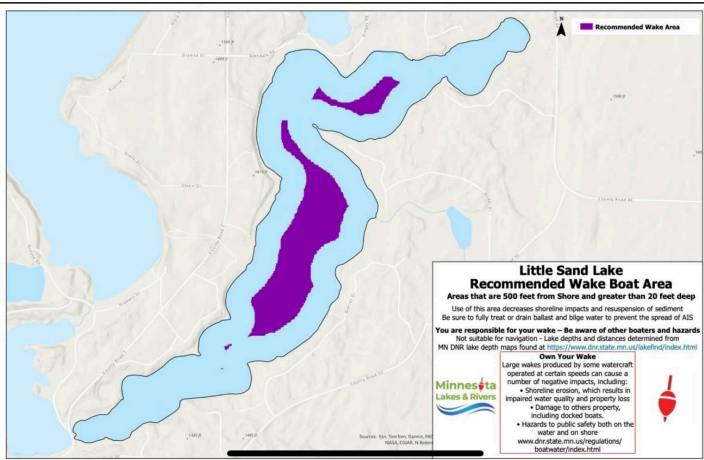
The Little Sand Lake Association encourages all residents and guests to:

- Continue following "Clean, Drain, Dry" practices
- Monitor docks and lifts for zebra mussels
- Use zebra mussel samplers throughout the season
- Report invasive species concerns promptly to COLA, our Little Sand Lake Association Board and the DNR. Once reported, we will begin following our Rapid Response Plan.
- Stay informed about AIS legislation and funding discussions
- Support local lake monitoring and volunteer efforts

Protecting Little Sand Lake will require continued cooperation from everyone who enjoys our lake. Awareness, prevention, and local involvement remain our best tools in helping preserve the quality of our lake for future generations.

HEALTHY LAKE COMMITTEE

Wake Awareness



Little Sand Lake Recommended Wake Boat Area New Sign at Public Access

Almost every motorboat can create a wake, which is why boaters must be aware of the danger wakes present and the damage they can do. While common courtesy dictates boaters should control their wakes, there are consequences beyond how wakes may affect people. So, what do boaters really need to know when it comes to owning their wake?

Under Minnesota law, the damage your wake causes is treated the same as damage caused by an actual collision. Personal watercraft (PWC) must stay at least 150 feet from shore. There is no required distance for boats, but by staying at least 200 feet from shore or other structures boaters can reduce the likelihood their wakes will cause damage. If you're engaged in an activity that creates artificially enhanced wakes, a greater distance from shore is necessary to prevent damage.

Be aware of your environment and what's going on around you - this applies to everyone on and around the water.

- Have a designated lookout to keep an eye out for other boats, objects, and swimmers.
- If crossing a wake, cross at low speeds and keep a close lookout for skiers and towables.
- Comply with all signs and respect barriers. This includes speed limits, no-wake zones, and underwater obstructions.

Stay away from shorelines, docks, or other structures. Backing a boat up to a riverbank or lakeshore can damage the area and lead to erosion. Travel slowly in shallow waters.

- Travel slowly in shallow waters and avoid boating in water less than 2½ feet deep. High speeds near shorelines lead to large wakes that cause shoreline erosion.
- Check local ordinances, restrictions, closures, and permit requirements for the body of water you are on.
- Ask permission from the landowner(s) before crossing private property.

Minimize repetitive passes. Once you've run a line, move on to another area. Comply with all signs and respect barriers.

Respect the rights of others so everyone can enjoy their time on the water - keep the noise down, be courteous to other boaters, and show consideration to all recreationists on and around the water.



Environmental impacts of wakes

Large wakes produced by watercraft can result in a variety of negative environmental consequences, including:

- Shoreline erosion;
- Impaired water quality resulting from increased sediment in the water;
- Loss of shoreline vegetation, which helps stabilize the shore and provides important habitat for fish and wildlife.

These impacts are greater when water levels are high and shorelines are saturated.

Boaters must be aware that their actions directly impact the environment. They should take steps to reduce their wake when operating near shore or when water levels are high.

For more information please visit <https://www.dnr.state.mn.us/safety/boatwater/own-your-wake.html>

COLA UPDATE

Hubbard County COLA (Coalition of Lake Associations) continues to play an important role in protecting the health of our lakes and rivers. HC COLA includes 31 lake associations representing 43 lakes and more than 2,775 members throughout Hubbard County. Representatives meet monthly to discuss lake-related issues, hear updates from the DNR and environmental agencies, and collaborate on prevention and monitoring efforts that impact our area lakes.

One of the largest concerns discussed this past year has been the identification of Zebra Mussels (ZM) in both Potato Lake and Fish Hook Lake. The discovery at Potato Lake was especially concerning due to the extent of the infestation before detection. These findings highlight the growing risk of Aquatic Invasive Species (AIS) spreading throughout connected waterways.

For Big Sand, Little Sand, and surrounding lakes, this issue is particularly important because of the movement of boats and recreational equipment throughout our lake chain. Little Sand

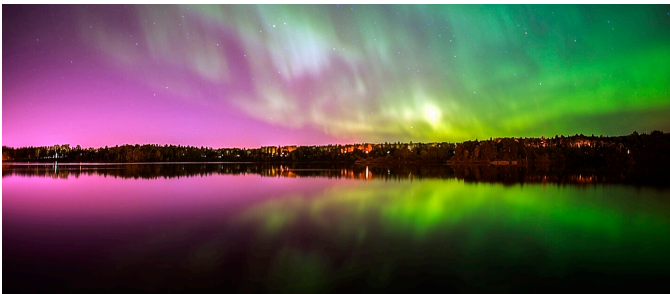
and Lake Ida are connected, and traffic between Big Sand, Lake Ida, and Little Sand increases the importance of continued education, prevention, and monitoring efforts.

Current focus areas include:

- Expanded Zebra Mussel monitoring and dock samplers
- Increased public education and awareness
- Encouraging proper decontamination of all watercraft
- Collaboration with neighboring lake associations
- Continued vegetation and water quality monitoring
- Investment in new signs and boat cleaning tools at public launch sites

Education and prevention remain our best tools in protecting the long-term health of our lakes. Thank you to all volunteers, monitors, and lake residents helping to keep our waters healthy and AIS-free.

NORTHERN LIGHTS OVER LITTLE SAND



One of the many wonderful things about living at Little Sand Lake is that we can often enjoy the beauty of the Northern Lights right from our own backyards. We love seeing the amazing photos neighbors capture and share throughout the year.

The Northern Lights, also called the Aurora Borealis, occur when charged particles from the sun interact with Earth's magnetic field and atmosphere. These particles create glowing waves of light that can appear green, purple, pink, and sometimes even red across the night sky. Northern Minnesota is one of the best places in the lower 48 states to experience them.

The best viewing is usually on clear, dark nights away from bright outdoor lighting. Activity often peaks between 10 p.m. and 2 a.m., although the lights can appear earlier or later.

There are also many smartphone apps that can

alert you when aurora activity is increasing. One popular app is Aurora Pro, but there are many others available that provide forecasts, alerts, and viewing conditions.

If you would like to try photographing the aurora, here are a few simple tips:

- Use a tripod or steady surface to keep your camera still
- Turn off your flash
- Night mode on newer smartphones works surprisingly well
- For cameras, use a longer exposure setting if available
- Include people, trees, cabins, docks, or the lake in your photo to create a more interesting scene and show the scale of the lights
- Have patience — the lights often come and go in waves throughout the night

Even a faint glow to the eye can appear vivid and colorful in photos, so don't be afraid to snap a few pictures if you think you see something in the northern sky.

We encourage everyone to continue sharing your Northern Lights photos with the community — they are a beautiful reminder of how special life at Little Sand can be.

2026 LITTLE SAND LAKE CONTESTS

24th Annual Fishing Contest

Hope you will join in the fun at our 24th Annual Little Sand Fishing Contest for Property Owners and their guests.

The fishing contest is always the Saturday before the Taste of Dorset (which is held the first Sunday in August).

Prizes are awarded in each age group for the largest fish in each category.

We also have drawings for door prizes for those who register, donated by area businesses, board members and Little Sand residents.

Volunteers are needed! Please contact Mark Doda if you can help!



When/Where: Saturday, August 1, 2026, Meet at the Public Water Access

Time: 5:00-5:15 PM – Registration - \$1.00 per person,

5:30 to 7:15 Fishing on Little Sand Lake, 7:30 Prizes awarded

Age Groups: Children - 10 and younger, Youth - 11 to 17, Adults - 18 and over

Categories: Walleye, Northern, Large Mouth Bass, Small Mouth Bass, Rock Bass, Crappie, and Sun Fish

2026 Photo Contest

Little Sand Lake Association Photo Contest! A fun way to encourage community involvement is to capture the beauty of Little Sand Lake in photos. We will once again be sponsoring a Little Sand Lake Photo Contest for 2026 and encourage residents to participate throughout the season.

We invite residents to submit photos that showcase the scenery, wildlife, recreation, and memorable moments that make lake life special throughout the year.

Ideas for photo submissions include: Sunrises and sunsets, Northern lights, Boating and water recreation, Fishing memories, Wildlife and nature, Kids enjoying the lake, Family gatherings, lake activities and Seasonal beauty around Little Sand Lake. Registration information will be posted on our website in early June.



We will once again have voting in three categories:

- Under 18 • Over 18 • People's Choice

A prize will be awarded in each category.

The \$5.00 entry fee per picture will go directly into our AIS (Aquatic Invasive Species) fund to help support protection efforts on Little Sand Lake.

Winning photos may be featured in future newsletters, our website, annual meeting displays, or future lake calendars. Start snapping those pictures and help us celebrate the beauty of Little Sand Lake

Boat Contest Parade!

Every year the Boat-Decorating Contest is a huge success, and we're excited to do it again! Many thanks to NAPA Central (Adam Goebel and Randi Herda) for sponsoring this year's contest for Little Sand Lake's 2026 Independence Day Boat Parade! The parade will take place on Saturday, July 4.

A Few Details:

- Participants must register by Wednesday, July 1.
- [CLICK HERE](#), scan QR code, or email littlesandlakeaa@outlook.com to register!
- Meet in front of Zorbaz at 9 am on July 4.
- The parade will run clockwise this year.

We Need Judges! Prizes can't be awarded without judges. We are seeking volunteers to help judge the boats. If interested, please contact Randi at erandilynn@hotmail.com or comment on the pinned Facebook post on our group page. Randi will follow up with further details.

Note: You don't have to decorate your boat to join the Boat Parade. Everyone is welcome to participate! The more, the merrier!

4th Annual Little Sand Lake Boat Parade Contest!

Saturday, July 4th 2026, 9am
(Rain or Shine)

1st Place = Trophy AND \$150 Cash!
2nd Place = \$100 Cash!
3rd Place = \$50 Cash!

Sponsored by:


Details

- Must register by scanning the QR Code or email boatparade@mynapacentral.com
- Meet in front of Zorbaz at 9am
- Rotation will be clockwise this year
- Judging will be at the "Sandbar"
- Winners will be announced on Facebook and Email
- Your boat can have any theme you wish as long as it is family friendly, but we are suggesting "America 250"

Scan to Register

The Best Decorated Boat Wins!

IMPROVEMENTS & INVESTMENTS

The Little Sand Lake Public Access has recently received a facelift!



The previous signage was faded and worn, and the access now features brand-new signs. I recreated the signs in collaboration with the local DNR. My former employer, Pixelwerx, generously produced them. Additional donations from the Hallstrom and Goebel-Herda families helped complete the project. Diane Smith and I finished the installation, and the access is now ready for the summer.

Additionally, the Board of Directors purchased a new cleaning station sign through Hubbard County COLA. This station includes tools to clean your watercraft and trailers to prevent the spread of invasive species and protect our lakes and rivers. An additional sign, specifically mapped for Little Sand Lake through Minnesota Lakes & Rivers is featured. This map recommends the safest area for wake boat use to help preserve our lakeshore and its fragile ecosystem.

We would also like to recognize the volunteers who donated their time last summer to trim and haul away overgrowth at the access. Special thanks to Nancy Doda, who continues to maintain the kiosk and keep the area clean.

I hope you enjoy the fresh look!

See you on the lake! ~ Karen Netland



NORTHWEST MINNESOTA FOUNDATION

If you log onto the [Northwest Minnesota Foundation's](#) (NWMF) website, you will see the following mission statement:

As a force and resource for northwest Minnesota, we champion ideas that stabilize and strengthen communities.

In 2023, the LSLAA Board of Directors voted to invest \$10,000 into an endowment with NWMF. An endowment is an asset, owned by a nonprofit organization, to support its mission. The principal, or corpus (that initial investment) is held in perpetuity and remains invested. The goal is to never spend it, ensuring the fund lasts forever.

Our endowment generates income through investments, like stocks, bonds & real estate. A small portion of those earnings is placed annually into a

'spendable account' that LSLAA can use to support our goals. The rest of the earnings are added to the original investment, so the fund continues to grow.

Over the past 3 years, we have shown a return on our investment of approximately 11%.

All contributions to the Little Sand Lake Endowment Fund are fully tax deductible and we are listed on their website, so anyone interested in the health of the lake can give. This is the 'Purpose Statement' that is shown:

Provides financial support to protect, preserve, restore, and enhance the quality of Little Sand Lake and its environments.

We all love our lake and we want it to remain one of the clearest lakes in Minnesota – this is one way to help the next generation protect Little Sand Lake.

HEALTHY LAKE COMMITTEE

Little Sand Lake Health

Fellow Little Sand Lake Supporters!

Little Sand Lake is warming up and it is now time to take our lake toys out for another super fantastic summer!

As the Healthy Lakes Committee Chair, I look forward to expanding my knowledge and awareness on Aquatic Invasive Species (AIS) issues affecting our lake. My knowledge gained by participating in AIS training and HCCOLA will help provide guidance and support while engaged in crucial early AIS detection. Early detection of AIS invaders before they spread will allow for rapid intervention. As a primary benefit of Little Sand's Rapid Response plan, this very swift action can save thousands of dollars in long term management, protect native ecosystems and fish stock from permanent damage.

AIS Training and HCCOLA

AIS Detectors Core Course is an introduction to aquatic invasive species (AIS) science, identification, and surveillance. I will enroll in this University of Minnesota's Extension 16-hour course which will provide guidance on how to identify and report invasive species, best practices for preventing the spread of AIS, relevant rules and regulations, and how to search for AIS on Little Sand Lake.

I recently accepted a position to serve as a representative for Little Sand Lake on HCCOLA – Hubbard County Coalition of Lake Associations. I'll report findings to the LSLAA Board on relevant matters from various COLA meetings. This will help to further my knowledge and stay a tune to opportunities and concerns other lakes are encountering around the area. HCCOLA's mission is to protect and enhance the quality of our lakes and rivers, preserve the economic, recreational and natural environmental values of our shorelands and promote the responsible use of our waters and related habitats.

Zebra Mussel confirmed by DNR on Little Sand Lake Aquatic Invasive Species such as Eurasian Watermilfoil and Starry Stonewort are surrounding Little Sand Lake and unfortunately, the first Zebra Mussel was found along the east side of Little Sand on November 9th 2025. The actual photo of the first Zebra Mussel found on Little Sand is attached in the photo below.



The Little Sand Facebook Zebra Mussel notification is attached. The following commentary describes how the **Rapid Response Plan** was initiated immediately. Once an AIS infests a lake, it cannot be eradicated; however, with early detection, it can be managed and controlled. During the 06/13/26 Annual Meeting, additional information will be discussed and a request will be issued for additional volunteers to hang Zebra Mussel samplers (settlement plates).

Little Sand Facebook Post

Cindy Dolby Nollette
December 4, 2025

Dear Little Sand Lake Association Members:

I hope this letter finds you well. We are writing to inform you of an important environmental update concerning Little Sand Lake. Yesterday (December 2, 2025) the DNR confirmed the presence of at least one zebra mussel in our lake. Little Sand Lake will now be identified as an Infested Lake.

Several weeks ago, a lake owner alerted us to a suspicious finding on their zebra mussel sampler. We implemented our Rapid Response Plan. Bill Douglas from our Healthy Lakes Team evaluated the finding, as did Sharon Natzel, an AIS specialist with COLA (Coalition of Lake Associations).

We then contacted Gina Kemper, our AIS specialist with the DNR. She evaluated the sample and sent it to the DNR for further testing. We received news yesterday that the finding was confirmed to be a zebra mussel.

At this time, there were no additional findings on the property, at the public launch, or at our two samplers at Zorbaz. Inspections were done downstream and no further zebra mussels were found. Additional inspections will be conducted in the spring on Little Sand and in the downstream areas.

We will continue to provide updates as we have more information. In the meantime, we encourage all residents to follow any DNR guidelines and take precautions to prevent the further spread of invasive species.

We ask all owners who are at the lake to do an inspection of their docks, lifts, and any watercraft. It is particularly important to check the underside (if possible) of lifts and any areas that do not receive direct sunlight. Small zebra mussels may not be seen but can be felt—they will feel rough, like sandpaper. If you see anything suspicious, please contact us right away so that we can alert the DNR for further inspection. It is possible that more sites will be evaluated in the spring.

Thank you for your attention to this matter and for your continued stewardship of our beautiful lake.

Sincerely,

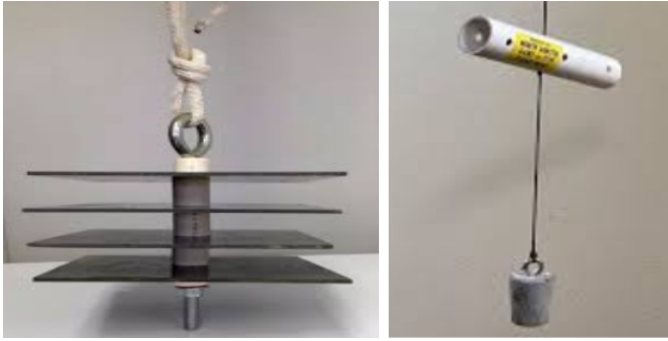
*Cindy Nollette, Cindy@cindynollette.com
President, Little Sand Lake Area Association
COLA Representative*

*Bill Douglas, bl.douglas1992@gmail.com
Chair, Healthy Lakes Team*

Zebra Mussel Sampler

Zebra mussel samplers (settlement plates) are low-cost tools deployed in lakes to detect newly arrived invasive mussels before they spread. Typically made of PVC or hard plastic, they are hung from docks and suspended about one foot off the lake bottom to collect juvenile mussels. Zebra Mussel like to attach to most anything, so the samplers do not have to look fancy and any hard item attached to a rope will do.

How to Build & Deploy a Zebra Mussel Sampler



Samplers act as artificial hard surfaces that free-floating larvae (veligers) latch onto when they are ready to mature.

- **Materials:** You can use a few small, square plates of PVC separated by spacers and secured with a central bolt.
- **Placement:** Tie the sampler to a secure dock.
- **Depth:** Ensure the sampler hangs roughly one foot off the lake floor to avoid native bottom-dwellers like crayfish or snails.

Zebra Mussel Inspection & Monitoring

- **Schedule:** Check the plates every two weeks, as early-stage juveniles are tiny and easily missed.
- **Technique:** Carefully lift the plate and run your fingertips over the surface. Newly attached mussels feel like rough sandpaper.
- **Verification:** If you spot or feel suspicious bumps, scrape a few into a sealed bag and report them to Bill Douglas - your aquatic invasive species (AIS) contact at 651-492-9332 or email at bl.douglas1992@gmail.com. Bill will review the sample and report to the lake association and DNR. Bill Douglas will also be inspecting various samplers, docks and lifts throughout the summer to detect Zebra Mussels.

Eyes on the Water

Zebra Mussel Monitoring In addition to the veliger testing by the water quality team, many residents help monitor zebra mussels using dock-mounted settlement samplers—simple, low-maintenance devices placed about 12 inches above the lake bottom.

Current Zebra Mussel sampling volunteers include: Wayne Swanson, Rod & Char Westrum, Tony & Maggie Yerkes, Rob & MaJeana Hallstrom, Cindy Nollette, Karen Netland & Diane Smith, Punky & Don Catlin, Bill & Lori Douglas, Greg & Tracy Dravis, Marshall Howe, Lee & MaryJo Macklem, Marsha & Jerry Fischer, Mark Doda, and Steve Trutna.

Due to the new zebra mussel infestation in Little Sand, we are looking to add even more volunteers around the lake to do this monitoring. Settlement Samplers Aren't Foolproof — Stay Vigilant for Zebra Mussels!

Even when used consistently, settlement samplers may not detect the early presence of zebra mussels.

For example, on Little Sand, diligent monitoring failed to catch an early infestation—zebra mussels were only discovered last fall during dock removal, despite clean sampler results. The takeaway: keep an eye out. Inspect docks, lifts, and equipment closely, especially at the end of the season.

Healthy Lake Committee – Water Quality and Aquatic Vegetation

The Little Sand Lake Area Association (LSLAA) and many volunteers are dedicated to protecting our lake from Aquatic Invasive Species (AIS). The two primary groups aligned to the Healthy Lake team are as follows: Water Quality Monitoring and Aquatic Vegetation Monitoring.

Water Quality Monitoring

Team Members - Chris Sorensen, Larry Odegard, Mark Doda, Rich Soderberg, Wayne Swanson

From May - September, this group conducts 1–2 monthly tests at the lake's deepest point.

Monitoring includes:

- Dissolved Oxygen and; Temperature
- Secchi Disc Readings (including MPCA/CLMP reporting) - A depth of over 32 feet was recorded on 05/17/26
- Chemical Testing
- Veliger (zebra mussel larvae)

Important note: If your contact information is different, please read Tennessee Warning on page two regarding private data

Date	Time	Secchi (nearest 0.5 ft)	B*	PC (1-5)
Ex 5/20/2025	11:00	5.5 ft		2
1 5-18-25	12:50	2.5 ft		1
2 6-15-25	11:20	2.5 ft		1
3 6-15-25	11:20	2.5 ft		1
4 7-20-25	5:10	1.2 ft		2
5 7-20-25	5:10	1.2 ft		2
6 8-12-25		1.7 ft		2
7 8-12-25		1.7 ft		2
8 9-21-25		2.5 ft		2
9 9-21-25		2.5 ft		2
10		2.5 ft		2

Little Sand Lake – 2025 Secchi Data Sheet

Aquatic Vegetation Monitoring

Team Members - Marshall Howe, John Lund, Luanne O'Neill,

Wayne Swanson, Greg & Tracy Dravis

Vegetation is sampled 3–4 times each season at six lake locations using rake samplers.

The goal is to detect invasive species such as Eurasian milfoil, starry stonewort, and curly-leaf pondweed.

Samples in 2025 did not detect AIS plant life.

New blue and white cleaning station signs and tools at the Little Sand Lake public access (see page 8).

I look forward to seeing you at the June 13 th Annual Meeting to discuss how the Healthy Lakes Team is currently engaged to preserve and protect our lake.

Wishing you and your guests a safe and joyful summer on Little Sand!

Warm regards,

Bill Douglas LSLAA Healthy Lakes Committee Chair.
Bl.douglas1992@gmail.com 651-492-9332

2025 SOCIAL EVENTS

A NOTE FROM PHYLLIS TRUTNA



It will be 10 years this fall that I have had the pleasure and privilege to serve on the LSLAA Social Committee. I appreciate all the help that everyone has given me. This will be my 10th summer as Chair, so I have decided that at the end of this summer, I will be concluding my time on the committee. I am happy to announce that Amy Sorensen has graciously accepted to be Chair of the Social Committee beginning this fall. Thanks Amy, we appreciate you!

Best Regards, Phyllis Trutna

