



Little Sand Lake Area Association 2021 Annual Meeting

**In person at Zorbaz
Online via Zoom**

**Saturday, June 12, 2021
8:00-8:30 Log-in to Zoom, Social Time,
and Registration**

8:30 Business Meeting Begins

NOTE: This meeting may be recorded.

*Thank you to our many Little Sand Lake
photographers for the beautiful photos!*

Photos copied from LSLAA Facebook page.

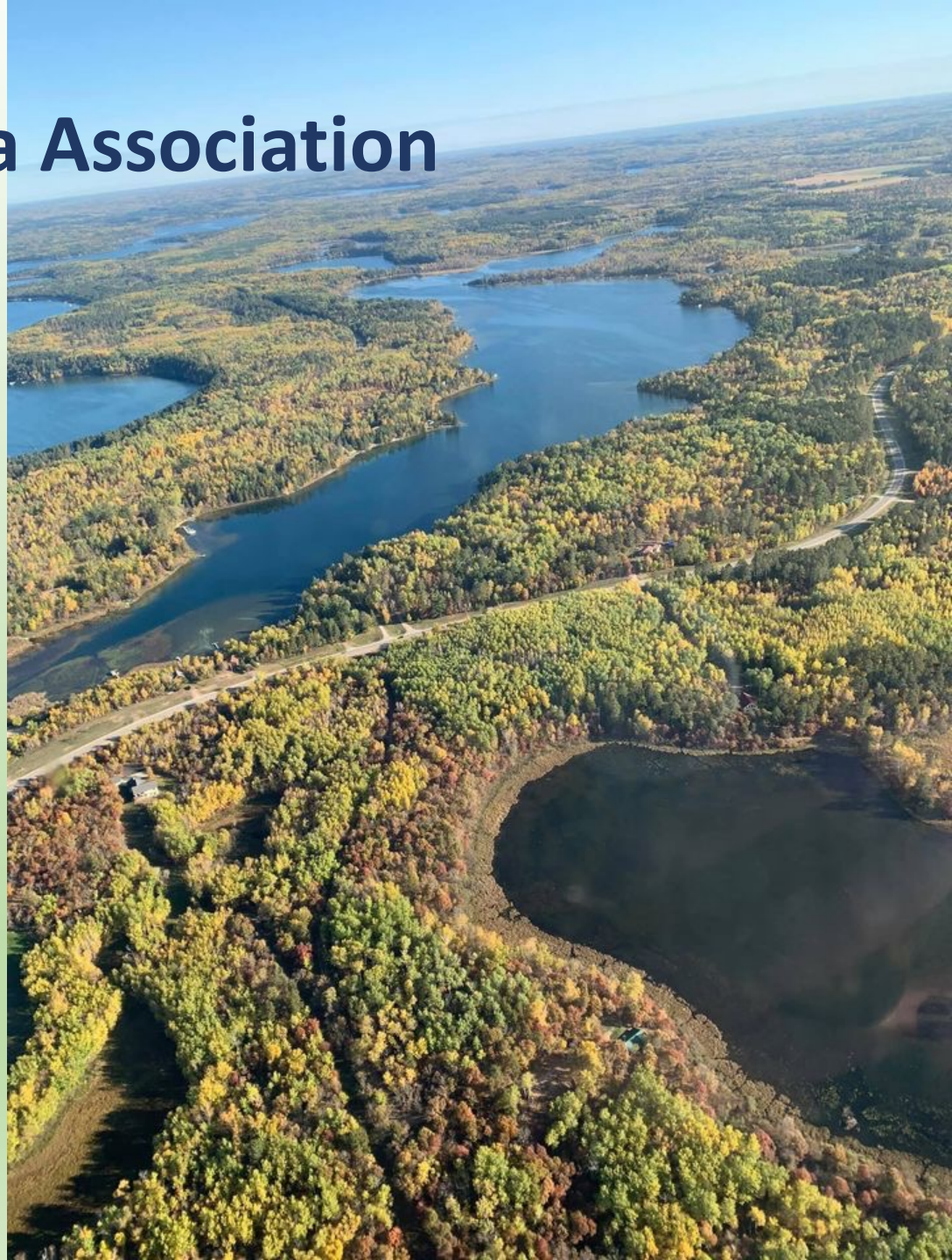
Little Sand Lake Area Association

Annual Meeting

June 12, 2021

Welcome and Call to Order
MaJeana Hallstrom, President

Secretary's Report
Cindy Nollette, Secretary





Vote to Accept Secretary's Report

- **Yea**
- **Nay**
- **Abstain**

Redacted for website posting.
Contact LSLAA Treasurer for
questions.

Treasurer's Report

Punky Catlin

**Reconciled through
May 31, 2021**

Treasurer's Report

**Year End,
ending
December 30, 2020**


Redacted for website posting.
Contact LSLAA Treasurer for
questions.

Redacted for website posting.
Contact LSLAA Treasurer for
questions.

**2020 LSLAA
Budget
and
Actual Expenses
for 2017-2020**

2020 – COVID Year

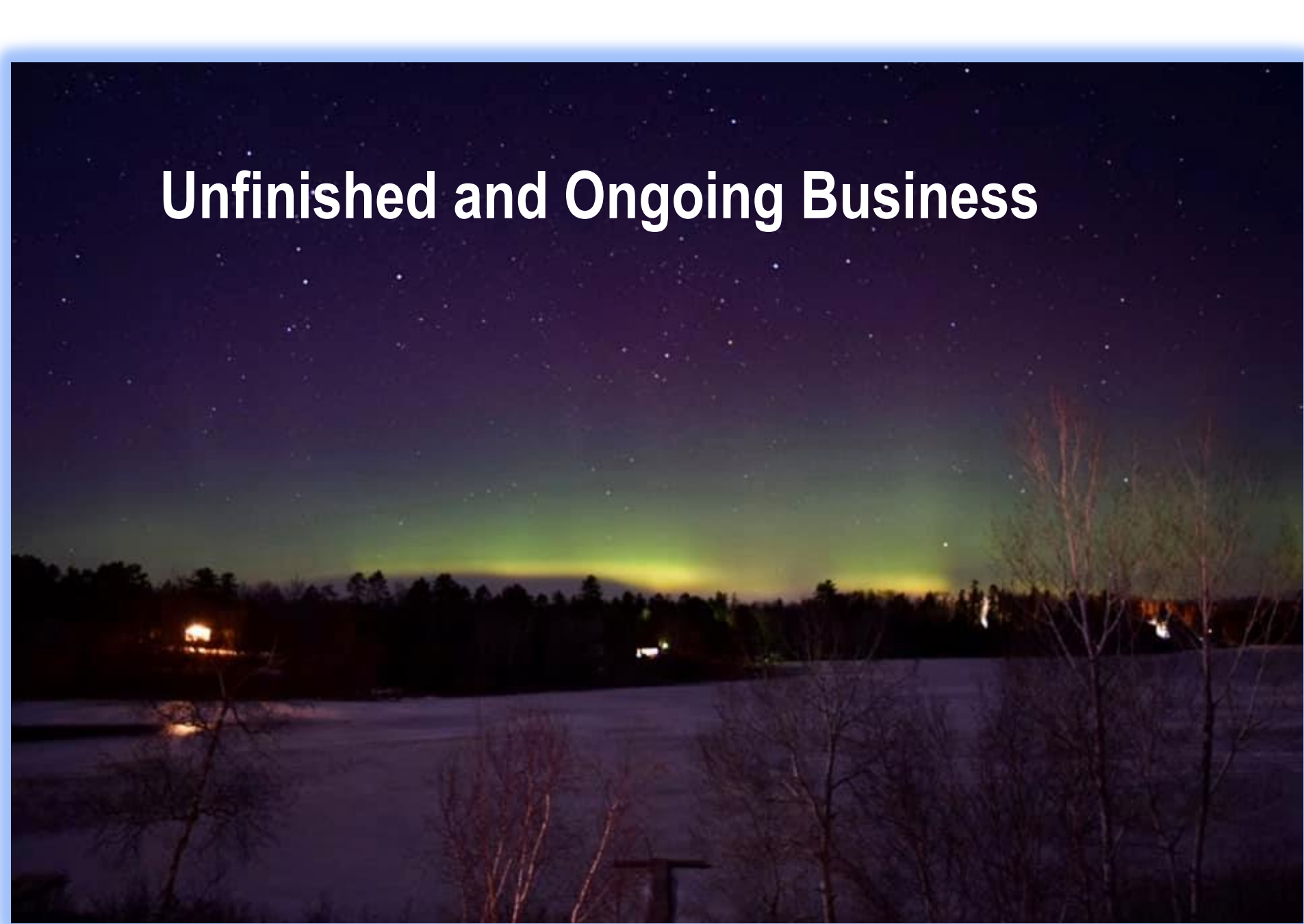
*Here's how we
spend your dues
and donations!*



Vote to Accept Treasurer's Report

- Yea
- Nay
- Abstain

Unfinished and Ongoing Business





Healthy Lake Report

**MaJeana Hallstrom, COLA Rep
and
Board Member as Past President**

- **Boat/Launch Inspections**
- **COLA Grant: Vegetation Mapping**
- **Eyes on the Water**
- **Lake Water Quality Monitoring (Larry Odegard)**





Boat/Launch Inspections

- **Total of 475 hours of inspections**
 - 119 hours paid by LSLAA
 - 68 hours paid by Lake Emma Township (through grant from township)
 - 288 hours paid by county/state
- **Started weekend of fishing opener**



Decontamination station open

call ahead
218-252-6738

Located at:
**812 Henrietta Avenue S
Park Rapids, MN 56470**

**There is also one located at
the Bemidji Middle School**

**BE A
HERO
TRANSPORT
ZERO**

**UNWANTED
STARRY
STONEWORT**

**FIGHT THE SPREAD OF
AQUATIC INVADERS**

REMOVE PLANTS, ANIMALS AND MUD FROM ALL EQUIPMENT.

DRAIN ALL WATER FROM YOUR BOAT AND GEAR.

DRY EVERYTHING THOROUGHLY WITH A TOWEL.

TRANSPORTZERO.ORG

Brought to you by: Counties of Douglas, Otter Tail, Pope, Cass, Becker, Aitkin and LARA and PLA of Crow Wing County and J&K Marine.





ALS Update

- **Nothing to report in our lake**
- **Faucet Snails in Upper Bottle, 4th Crow Wing, and Duck Lakes**
- **Curly Leaf Big Mantrap; Eurasian Milfoil in Big Mantrap, but think it is under control**
- **Zebra Mussels in Long Lake**

COLA Grant Opportunities

- Up to \$2,000 from COLA for things such as
 - Research, studies or projects on water quality, shoreland development and disseminating information thereof to member associations and the general public.
- Little Sand Lake has been awarded a grant to do Vegetation Mapping
 - Follow-up to mapping done by Dan Kittilson and gang in 2006
- See Hubbard COLA website for details





Eyes on the Water

- If you have a Zebra Mussel sampler (plastic type or cement block)
 - Hang from your dock ASAP if not already done
 - Fill out survey at the end of the summer
 - LSLAA has done a great job in the past



Restore the Shore

Restore The Shore (RTS) is a partnership of HC COLA and Hubbard SWCD. The RTS program allows HC COLA members to place small-quantity orders for high quality, low-cost tree, berry, and shrub plants.

- Order trees in October; pick them up in early May.
- Little Sand Lake residents purchased over \$500 in trees/shrubs in 2020.
- Glenn Gapp is our RTS Coordinator.



**Restore
Your
Shore**

Protect water quality and habitat

Maintaining our Healthy Lake

**Lake Water Quality and Environmental
Monitoring**

**13 Different Activities Take Place Multiple
Times over the Summer by Volunteers**

Little Sand Lake

Healthy Lake Monitoring Tasks and Volunteers

Original Date: 6/20/21 Updates: 6/30/21, 7/5/21, 7/7/21, 9/14/21; 1/16/22

Type of Monitoring	Purpose of Monitoring	Frequency of Monitoring	Location of Monitoring	Report or send results to:	VOLUNTEERS who currently do this monitoring*
Boat Launch Inspections by Hubbard County Environmental Services Department	<p>Inspectors check watercraft entering Little Sand Lake for aquatic invasive species (AIS), such as Eurasian Milfoil, Zebra Mussels, etc.</p> <p>Environmental Services Dept. determines the inspection schedule based on historical data of most frequent days/times watercraft enter/leave the lake.</p>	<p>Each fall, the Little Sand Lake Association Board determines the total number of inspection hours for the lake for the following season—usually a total of 475 hours. The state/Hubbard County, Emma Township, and LSLAA pay for the inspectors at an hourly rate. LSLAA usually pays for about 130 hours of inspection time at the existing hourly rate.</p> <p><i>Note: In 2021, LSLAA paid for about 155 hours due to COVID-related reduction in state funding.</i></p>	Public Boat Launch	<p>Funding Info:</p> <p><i>In the fall, Hubbard County Environmental Services determines the total number of state/county-funded inspection hours and shares that with the lake associations. Emma Township sends a grant form to the lake's COLA rep, usually in December, for the lake to request funds from the township. Lakes are informed in early January as to what their grant amount will be. Based on the above information, LSLAA determines the final number of hours the LSLAA will pay. LSLAA's treasurer submits a check to Hubbard County by the end of January.</i></p>	<p>Paid Inspectors hired and managed by Hubbard County Environmental Services perform these inspections.</p> <p><i>Note: The hourly rate changes is determined by Hubbard County Environmental Services Department and changes as necessary.</i></p>
County Rd 50 Pick-up	We have “adopted” this highway and are responsible for picking up trash along this road.	3 times/summer	Sides and ditches along CR 50.	Not applicable	<p>Volunteers from Little Sand Lake</p> <p>Coordinated by Larry & Renee Bexell</p>
<p>Dissolved Oxygen (DO) Water Temperature Testing</p> <p>We have a water monitor instrument that we share with Big Sand Lake. We usually have the instrument calibrated every winter and share the cost of that with BSL.</p>	Warming weather & poor land-use practices threaten our cold & cool water fish species. Tullibee/Cisco are cold water species that walleye & northern pike eat. Amount of DO/water temp can affect Cisco populations.	<p>May - September</p> <p>DNR recommends minimum of 1x/month; 2X in August (usually hottest month).</p> <p>Goal is 2X/month</p> <p>This should be done in September at least one time.</p>	<p>Deepest part of the lake. About straight west of public access.</p> <p>Identify location with waypoint.</p>	<p>Local Fisheries, DNR</p> <p>Calub Shavlik Acting Area Supervisor MN DNR – Fisheries 301 S Grove Ave Park Rapids, MN 56470 218-732-4153 ext 223 Calub.shavlik@state.mn.us.</p>	<p>Larry Odegard Mark Doda Wayne Swanson</p> <p>Gerry and Ann Kaluzney</p>
Secchi Disc Reading	Monitor clarity of lake water.	<p>May – September</p> <p>Same time as DO₂ testing</p>	Measure water in deepest part of lake (between Bexell's and public launch). Do in EXACT same spot every time.	Sent to DNR with DO ₂ data (See above)	<p>Larry Odegard Mark Doda Wayne Swanson Gerry and Ann Kaluzney</p>

Secchi Disc Reading for MPCA/CLMP** (Same instrument as above)	Monitor clarity of lake water.	May – September Recommended: 1X/week. Record data on MPCA/CLMP record-keeping data sheet and send data in at the end of the season.	Same as above	**Minnesota Pollution Control Agency/Citizen Lake Monitoring Program Shannon Martin, CLM Specialist Environmental Analysis and Outcomes Division MPCA clmp.pca@state.mn.us 651-296-6300	Larry Odegard Mark Doda Wayne Swanson Gerry and Ann Kaluzney
Lake Chemicals Test Coolers and water sampling tubes are received from RMB labs in early May.	Monitor levels of phosphorus, chlorophyll-a and water transparency (secchi depth) in the lake water.	May – September Usually 1X/month Schedule is established by HC COLA	Deepest part of lake (between Bexell's and public launch). Do in EXACT same spot every time.	Samples are collected and taken to HC COLA collection site. HC COLA then takes all samples from Hubbard County lakes to RMB Labs for chemical analysis of lake water. RMB Labs link: RMBEL - RMB Environmental Laboratories, Inc	Larry Odegard Mark Doda Wayne Swanson Gerry and Ann Kaluzney
Veliger (baby zebra mussel) Testing <i>We use a net that was purchased for Little Sand Lake by MaryJo Groehler. (NEVER allow it to be turned in to COLA. We own it.)</i>	Gather water samples to monitor for zebra mussels. A video about how to conduct this test is available on the RMB Labs website: Zebra-Mussel-Veliger-Monitoring-Procedure05132020.pdf (rmbel.info) .	May – September (This is usually done in conjunction with COLA's water sampling. 2 samples collected and sent in with the water samples to RMB Lab. Approx. dates July 1 and 15 th .	Sampling done near river inlet by Zorbaz, south of public access, and at the river outlet. (could mark with waypoint)	HC COLA collects water samples and brings them to RMB labs in Detroit Lakes	Larry Odegard Mark Doda Wayne Swanson Gerry and Ann Kaluzney
Vegetation Sampling Use a rake-type device to drop to the bottom of the lake to bring up/gather vegetation.	Checking vegetation at bottom of lake at specified locations. Monitoring for AIS.	3X/season: mid-June, mid-July, mid-August	-Public access -Zorbaz -Little Sand Villas (formerly North Star Resort) -Loonies -Near Rossman's -Near Hallstrom's	Report to DNR if suspicious plant or invertebrate is found. Contact Nicole Kovar, MN DNR Northwest Region Invasive Species Specialist Ph: 218-616-8102 or nicole.kovar@state.mn.us	Marshall Howe Luanne O'Neill Larry Bexell <i>Looking for new volunteers to take this over.</i>

Water-Level Gauge A water gauge is set up in a specific area (currently at the Howe-McMillen lakeshore)	Monitor water level	May – September 1X/weekly (Sundays)	Currently gauge is set up at the Howe/McMillen lakeshore. (Hallstrom's have agreed to take this duty from Howe/McMillen when a transition is most appropriate)	Data is submitted in an excel file at the end of each month to: sandy.fetch@state.mn.us . Across the top of each file, the exact location of the lake in the state as is reiterated as: Little Sand Lake, Hubbard County, ID# 29015000	Janet Mcmillen Marshall Howe Rob and MaJeana Hallstrom taking over 2022
Ice In/Ice Out	Monitor date lake is completely frozen over in fall/winter (Ice-In or Ice-Over) and is completely free of ice in spring (Ice Out).	November-ish March/April-ish Record data on MPCA/CLMP record-keeping data sheet and send data in at the end of the season. (**Same data sheet used to record secchi disc readings for MPCA/CLMP.)		**Minnesota Pollution Control Agency/Citizen Lake Monitoring Program Shannon Martin, CLM Specialist Environmental Analysis and Outcomes Division MPCA clmp.pca@state.mn.us 651-296-6300	Wayne Swanson. Would be good to have other "ice-watchers" on the large side of the lake. Citizen watchers have recorded this info on the Little Sand Facebook page, which has also been helpful.
Loon Monitoring	Historical and General Interest. Watch over summer: <ul style="list-style-type: none"> #Nests #Baby Loons/nest in spring (May-June) #Baby Loons/nest end of summer (September) 	Observe over the summer <i>NOTE: HC COLA has a loon-monitoring opportunity going on now (see June 2021 HC COLA newsletter.) This year only 13 Hubbard County lakes have LoonWatcher Survey volunteers. If you would like to volunteer, please contact Andrew Herberg, MN DNR Nongame Wildlife Specialist at andrew.herberg@state.mn.us. See Loon Watcher Letter 2021 (state.mn.us)</i>	Across the lake. We usually have 4 nesting couples on Little Sand	HC COLA and/or andrew.herberg@state.mn.us	Steve Trutna will follow up with Hochsprung's and Peter's and HC COLA. Trutna's will be loon-watcher volunteers.
Monitoring for adult zebra mussels with Settlement Samplers or PVC Tubes. Notify DNR if your lake association has a Settlement Sampler at public access. (Via HC COLA)	Early detection of zebra mussels.	Identify "Citizen Watch Volunteers" on Little Sand. Check monitoring device weekly starting in July/August.	Suspend device: <ul style="list-style-type: none"> On shaded side of dock one foot off bottom. Place monitoring devices on all sides of lake. 	HC COLA, DNR Participate in HC COLA's "Eyes on the Water" survey. Eyes on the water link: http://hubbardcolamn.org/eyes-on-the-water---early-detection.html Contact Nicole Kovar, MN DNR Northwest Region Invasive Species Specialist Ph: 218-616-8102 or nicole.kovar@state.mn.us	Wayne Swanson has mounted and monitored Settlement Sampler at public access. Need to respond to Eyes on the Water Survey

The following project was done in 2005 & 2006. Little Sand has not done this since that time, as this is exhaustive and time consuming; however, the LSLAA Board does want to emphasize the value vegetation along the shoreline has in maintaining the pristine and clear nature of our lake.

Lake Vegetation Mapping In 2005 & 2006 Little Sand conducted the following mapping projects in conjunction with Park Rapids DNR Fisheries & Wildlife office. <ul style="list-style-type: none"> Emergent vegetation Submerged vegetation (Point Intercept Lake Vegetation Survey) 	Vegetation mapping benefits: <ul style="list-style-type: none"> Demonstrate beneficial role that bulrushes, cattails, water lilies play in the ecology of the lake. Encourages lakeshore owners to preserve their lakeshore in the natural state. Provides a benchmark for ongoing monitoring of the health of the lake.	Conduct vegetation mapping every 5 years. This was an extensive project and has not been done since the initial project. This is different than the current vegetation monitoring for AIS.	This was a lake-wide project done over 2 years. The Point Intercept Survey was conducted at 180 waypoints all around the lake.	This project was done in conjunction with the DNR Fisheries and Wildlife Office.	Last done by: Vern Thompson ¹ Jim Thompson ¹ Dan Kittilson Currently, not being done except for the focused AIS search for invasive aquatic plants. LSLAA Board is checking to see if DNR is now doing this type of monitoring with use of current technology, such as drones. ¹ deceased
Aquatic Lake Vegetation Survey (Mapping) To be done Summer 2022 funded by a HC COLA grant and LSLAA	Will contracted to RMB Labs from Detroit Lakes.	One time. Plan to follow up in 10 years. Some monitoring to be done each year by LSLAA volunteers.	180 pints on the lake to coincide with points mapped in 2006	RMB Labs will provide a final report to LSLAA and to MAISIC	Marshall Howe and TBD

Larry Odegard - Water Quality Monitoring



Committees and Appreciation

MaJeana Hallstrom

Social Events

- **4th of July Boat Parade**
9:00 am near Zorbaz
- **Annual Picnic**
August 7
- **Fishing Contest**
July 31
- **Coffees**

Social Committee

Membership/Welcome Packets
Communication and Education:

- Newsletter
- Website
- Directory
- Educational Material (Kiosk)
and Fishing Contest
- E-mail Coordinator
- Facebook

Phyllis Trutna, Chair
Amy Tronsgard

Luanne O'Neill
Jacob Nollette
Karen Netland
Nancy & Mark Doda

Christine Hobrough
Randi Herda

Recognition *and* More *Thank You's*

Social Committee:

- Phyllis Trutna, Chair
- Dar Swanson
- Janet McMillen
- Karen Odegard

Healthy Lake Water Monitor Volunteers

- Wayne Swanson
- Larry Odegard
- Mark Doda
- Glenn Gapp
- Ray Carlson
- Janet Mcmillen &
Marshall Howe



July 9, 2020 Storm:
Big tree didn't survive, but
the bear did!!!



ALOHA

Annual Picnic - Hawaiian Style!!

August 7th at the Hallstrom's
5:00pm

Come dressed in Hawaiian attire

.....or not, but please come!

Potluck dinner



Fishing Contest

July 31

Mark Doda



← Fun

and

Prizes →



LSLAA Board Members

Many thanks to the following members of the Board:

- **Christine Hobrough, President** – has completed first year of first term
 - **Cindy Nollette – Secretary**—has completed one term and is up for re-election.
 - **Glenn Gapp – Director at Large**—has completed first year of second term
 - **Steve Trutna, Vice President** – has served 2 terms as VP; will stay on the Board and run for **Director at Large**.
 - **Jane Amble – Director at Large**
 - **Karen Netland – Director at Large**
 - **Punky Catlin, Treasurer**—no term limits.
 - **MaJeana Hallstrom, Past President**
-
- **Larry Odegard, Director at Large** – has completed two terms and will be leaving the Board.



Board Members Nomination and Election

MaJeana Hallstrom

Slate of Candidates

- **Gerry Kaluzny – Director**
- **Greg Dravis – Director**
- **Steve Trutna - Director**

- **??...Vice President**
- **??...Treasurer**

Vote to accept slate of nominees:

- Yea
- Nay
- Abstain

- Comments from our
New President, Christine Hobrough

(joining via Zoom)

Barbra Jay
PHOTOGRAPHY



New Business

- **Directory Status**

- Online and Print
- PW on Little Sand Website:
Please contact our Email Coordinator for password.
(We are not publishing it here for security purposes, but we will tell you.)

- **Volunteers**

- Help wanted--needed!

- **Payment of Dues**

- Online – Credit card payment

- **Other**

- **Any Other Business?**
- **Motion to Adjourn**

Business Meeting is adjourned, but don't leave yet; we have a couple of announcements and PRIZES!

Announcements

Little Sand Lake Logo'd
Apparel & Merchandise
Angela Albee

Signs and Stickers
Larry Odegard



Prizes

Drawing from list of names of those who paid their dues by June 12.

Thank you to these generous folks who donated prizes:

- Karen & Ray Carlson, Aunt Belle's Candies and Gifts
- Photography by BarbraJo
- Dorset Corner Liquor
- Angela Albee, Adwear Specialties
- Dorset Candle Company
- Unknown Legend
- Companeros
- LaPasta
- Dorset Pizza & Ice Cream
- Cindy Lou's
- Emmaville Café & Gas
- Red Barn Kombucha
- Rhodes Garden
- LSLAA Board and Board Members
- Pure Juice
- Blu North Boutique
- Revel Brewing
- Summerhill Adventures
- Rustic Cabin Décor
- Chicken Coop
- Zorbaz
- Necce's
- Chops n Pops Bakery
- The Good Life
- Molly Poppins
- Fair's Forest & Flower
- Muskie Waters
- Mary & Mike Nelson

Donations from these businesses will be going towards prizes for the Annual Meeting, the Fishing Contest, and the Annual Picnic.



Have a great summer!!



