

Hubbard County  
Coalition of Lake Associations

“Restore the Shore” Program  
2016-17

September, 2016

Dear HCOLA and Lake Association Member,

Attached is the Order Form for Trees and Shrubs through HCOLA’s “Restore the Shore” program for 2017 delivery.

- Please order a minimum of 5 plants of a kind. Prices quoted on order form are per bundle of 5.
- Make checks payable to YOUR Lake Association.
- Give your order and payment to YOUR Lake Association’s “Restore the Shore” Representative or President.
- Orders for 2017 delivery are due November 1, 2016. Please get your order in early.
- Trees and shrubs will be ready for pick-up around the first week of May, 2017. Date is weather dependent. You will be contacted when the trees will be ready for pick-up.

Please consider planting more appropriate trees and shrubs in the lakeshore buffer zone on your property. This will help to stave off the runoff of pollutants into your lake and prevent lakeshore erosion.

Thank you for your interest and order in advance.

Theora Goodrich  
HCOLA “Restore the Shore” Coordinator  
email: [tdgoodrich@mac.com](mailto:tdgoodrich@mac.com)  
phone: (218) 652-3130

# COLA "Restore the Shore"

Theora Goodrich, Chair

Home: 218-652-3130

# 2017 Tree Order Form

**MN Native Seed & see our new Plant Kits on back page!**

|                |       |              |      |
|----------------|-------|--------------|------|
| Name           |       | Address      |      |
| City           | State | Zip          | Date |
| E-mail Address |       | Phone number |      |

| Deciduous Trees   | Growth Rate | Soil Type                  | Size    | Mature Height | # of bundles                    | *Price for 5 | Price for 250 | Cost |
|---|-------------|----------------------------|---------|---------------|---------------------------------|--------------|---------------|------|
| Crabapple, Dolgo  | Fast        | Moist/Well-drained         | 12"-18" | 35'- 40'      |                                 | 6.00         | 270.00        |      |
| Crabapple, Red Splendor   | Medium      | Well-drained               | 12"-18" | 15'-25'       |                                 | 5.00         | 225.00        |      |
| Maple, Red  | Medium      | Wet/Dry                    | 12"-18" | 45'-65'       |                                 | 6.00         | 270.00        |      |
| Maple, Sugar  | Medium      | Well-drained               | 12"-18" | 60'-75'       |                                 | 6.00         | 270.00        |      |
| Oak, Red  | Moderate    | Rich/Well-drained          | 6"-18"  | 60'-80'       |                                 | 6.00         | 270.00        |      |
| Walnut, Black   | Medium      | Well-drained               | 12"-18" | 50'-75'       |                                 | 5.00         | 225.00        |      |
| <b>Conifers</b>   |             | <b>5 trees per bundle</b>  |         |               | <b>Price Includes Sales Tax</b> |              |               |      |
| Cedar, White  | Slow        | Well-drained               | 8"-15"  | 35' - 45'     |                                 | 5.00         | 225.00        |      |
| Fir, Balsam   | Slow        | Moist                      | 6"-12"  | 40'-60'       |                                 | 5.00         | 225.00        |      |
| Pine, Jack  | Fast        | Well-drained               | 6"-12"  | 50'-70'       |                                 | 4.00         | 180.00        |      |
| Pine, Norway (Red)  | Slow        | Dry/Well-drained           | 9"-24"  | 60'-80'       |                                 | 5.00         | 225.00        |      |
| Pine, White   | Fast        | Well-drained               | 9"-16"  | 80'-100'      |                                 | 5.00         | 225.00        |      |
| Spruce, White   | Medium      | Moist                      | 9"-16"  | 40'-60'       |                                 | 5.00         | 225.00        |      |
| Tamarack  | Fast        | Wet/Moist                  | 6"-12"  | 40'-70'       |                                 | 5.00         | 225.00        |      |
| <b>Shrubs</b>   |             | <b>5 trees per bundle</b>  |         |               | <b>Price Includes Sales Tax</b> |              |               |      |
| Cherry, Nanking   | Med/Fast    | Well-drained               | 12"-24" | 6'-8'         |                                 | 5.00         | 225.00        |      |
| Cranberry, Highbush   | Fast        | Moist/Well-drained         | 12"-24" | 6'-15'        |                                 | 6.00         | 270.00        |      |
| Dogwood, Red Osier  | Moderate    | Highly Adaptive            | 8"-18"  | 8'-12'        |                                 | 5.00         | 225.00        |      |
| Elderberry  | Fast        | Moist/Wet                  | 12"-24" | 5'-12'        |                                 | 5.00         | 225.00        |      |
| Willow, Peach Leaf  | Moderate    | Trans. Upland/Moist        | 12"-18" | 13'-66'       |                                 | 6.00         | 270.00        |      |
| <b>Packets</b>  |             | <b>10 trees per packet</b> |         |               | <b>Price Includes Sales Tax</b> |              |               |      |
| Wild Berry (3-Elderberry, 2-Serviceberry, 3-Flowering Raspberry, 2-R. Mulberry) |             |                            |         |               |                                 | 20.00        | 180.00        |      |

**Growth rate**

Slow = 12" or less per year Medium = 13" - 24" per year Fast = 25"+ per year

Minimum order is 1 bundle of 5 trees per variety.

Please make your checks payable **for complete amount to your lake association.**

Tax is included in quoted price per bundle

|                                  |           |
|----------------------------------|-----------|
| Total Page 1                     | \$        |
| Total Page 2                     | \$        |
| <b>Total</b>                     | <b>\$</b> |
| <b>Balance Due</b>               | <b>\$</b> |
| Please return to your lake assn. |           |
| "Restore the Shore" Coordinator  |           |



**John Kissar**  
 21210 Goldenrod Dr.  
 Park Rapids, MN 56470  
 218 732 9678

| Seedling Protection            | Quantity | Price* | Total Cost |
|--------------------------------|----------|--------|------------|
| 5' Tree tube w/bamboo stake    |          | 4.50   |            |
| 3'x3' Tree mat w/staples       |          | 1.25   |            |
| 100 Bud Caps                   |          | 1.00   |            |
| Plantskydd                     |          |        |            |
| 1 quart pre-mixed liquid spray |          | 24.00  |            |
| 1 pound box powder             |          | 27.00  |            |
| 2.2 pound box powder           |          | 44.00  |            |
| 1.3 gallon premixed            |          | 60.00  |            |
| 1 pound granule shaker         |          | 11.00  |            |
| 3 pound granule shaker         |          | 24.00  |            |
| 7 pound granule shaker         |          | 45.00  |            |
| Flags                          |          |        |            |
| 4" square pink flag            |          | 0.15   |            |
| Native Seed Packets *          |          |        |            |
| Lakeshore/Waters Edge          |          | 65.00  |            |
| Pollinator Mix                 |          | 65.00  |            |
| Plant Kits **                  |          |        |            |
| Pollinator Plant Kit           |          | 62.00  |            |
| Raingarden/Lakeshore Kit       |          | 62.00  |            |
| Shade/Woodland Edge Kit        |          | 62.00  |            |

\* Each Native Seed Packet covers 500 square feet.

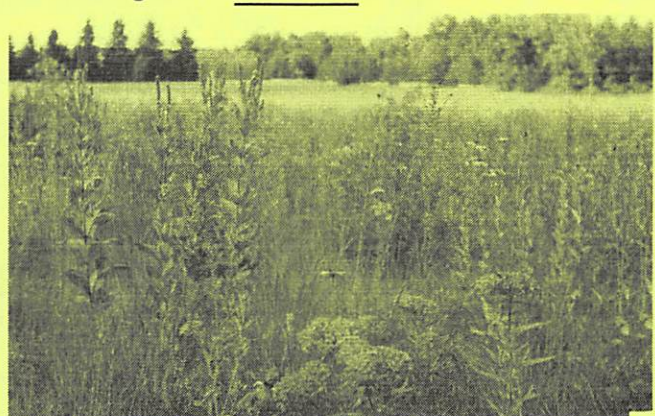
\*\* Each Plant Kit contains 36 plugs of 6 different species and covers 36 square feet.

Note - Tax already Included

Subtotal Page 2 \_\_\_\_\_



Lakeshore Seed Packet-Photo by MN Native Landscapes



Pollinator Kits - Photo by MN Native Landscapes

Landowner's Signature: \_\_\_\_\_

Hubbard County SWCD does not guarantee the survival of trees. All orders are subject to the same condition we receive from our suppliers.

**2017 Order Pickup**

Fri. May 5, 1 - 6 p.m., Sat. May 6, 9 - 3 p.m.

Sun. May 7, 1 - 3 p.m.

Location: Hubbard Co. Fairgrounds